

green tea

by LPPM STIKES NU TUBAN

Submission date: 24-Apr-2020 04:12PM (UTC-0500)

Submission ID: 1257318542

File name: JAdvPharmTechRes_2020_11_2_86_283072.pdf (4.62M)

Word count: 2243

Character count: 11278

Spine 3 mm

PubMed

ISSN 2231-4040

Journal of Advanced Pharmaceutical Technology & Research • Volume 11 • Issue 2 • April-June 2020 • Pages 1-...



Journal of Advanced Pharmaceutical Technology & Research

An Official Publication of Society of Pharmaceutical Education & Research

Volume 11 / Issue 2 / April-June 2020

www.japtr.org

JAPTR

 Wolters Kluwer

Medknow

Synthesis and characterization of green tea paste nanoparticles based on wet milling

Yuly Peristiowati,
Zauhani Kusnul¹

Department of Nursing, Surya Mitra Husada Health Institute, ¹Department of Nursing, Pamenang Health Institute, Kediri, East Java, Indonesia

J. Adv. Pharm. Technol. Res.

ABSTRACT

This study aims to analyze the synthesis of green tea herbs in the nanoform. Green tea is divided into three grades, namely Grade A, B, and C. Making pasta samples is done by wet milling technique. The tea paste sample was characterized by particle size analyzer and scanning electron microscope methods. Grade A green tea has a grain size of $77,014 \pm 50,759$ nm. Grade B green tea has a particle size of $12,987 \pm 7,674$ nm. Grade C green tea has a particle size of 4409 ± 5379 nm. It was concluded that the difference in grade of green tea determines the structure and size of the particles formed. Thus, the wet milling technique can be an alternative in making green tea nanoparticles for industrial scale.

Key words: Green tea, morphology, nanoparticle, wet milling

INTRODUCTION

The World Health Organization states that 80% of the world's population had used traditional medicine for hundreds of years. The discovery of synthetic drugs caused the population to move from herbal medicines to synthetic drugs. Although herbal medicine is still seen as nonquantitative, nonscientific, primitive and is used by those who are unable to access real medicine, since 2000, the use of traditional medicines has begun to increase again.^[1-4]

The function of herbs is based on the work of their active compounds in synergy to form pharmacological actions. Most herbs are not soluble due to low bioavailability and improved cleansing systems. This makes that herbal

medicine must be given in repetitive and high doses so that it becomes less potent in therapy.^[5] The efficacy and absorption of herbal medicines can be increased through nanoformulation and through incorporation with nanocarriers. Nanoherbal form is used to overcome the weaknesses of herbal medicines, namely low solubility, low permeability through the intestine, quickly disappear by oral route, and the first stage of metabolism before reaching blood circulation.^[6]

High-energy wet milling has proven to be a strong top-down approach to the production of nanoparticles. In this technique, material particles are suspended in aqueous solution and repeatedly pressed by colliding beads that are downsized to the nanometer scale, provided the grinding process is continued for a sufficient period. High-energy wet milling is used in many fields such as minerals, ceramics, pigments, microorganisms, and pharmaceuticals.^[7,8] Previous studies have proven the benefits of wet milling on the formation of quercetin nanocrystals.^[9]

Tea is the beverage most often consumed after water. Tea is consumed in the form of oolong, green, black, or

Address for correspondence:

Dr. Yuly Peristiowati,
Jl. Manila, No. 37, Sumberece, Tosaren, Kec. Pesantren,
Kota Kediri, Jawa Timur 64133, Indonesia.
E-mail: yulystikes@gmail.com

Submitted: 11-Oct-2019

Revised: 20-Nov-2019

Accepted: 18-Mar-2020

Published: 22-Apr-2020

7

Access this article online

Quick Response Code:	Website: www.japtr.org
	DOI: 10.4103/japtr.JAPTR_148_19

1

This is an open access journal, and articles are distributed under the terms of the Creative Commons Attribution-NonCommercial-ShareAlike 4.0 License, which allows others to remix, tweak, and build upon the work non-commercially, as long as appropriate credit is given and the new creations are licensed under the identical terms.

For reprints contact: reprints@medknow.com

How to cite this article: Peristiowati Y, Kusnul Z. Synthesis and characterization of green tea paste nanoparticles based on wet milling. *J Adv Pharm Technol Res* 2020;11:86-8.

white.^[10,11] Green tea is a nonfermented form that is consumed between 3 and 10 cups per day. The benefits of green tea include anti-inflammatory, antioxidant,^[12] anticancer,^[13] antiobesity,^[14] inhibiting metabolic syndrome,^[15] and antitoxin.^[16] To the best of our knowledge, until now, no study has made green tea in the form of nanoherbs. Therefore, this study aims to analyze the synthesis of green tea herbs in the nanoform.

MATERIALS AND METHODS

Classification of green tea

Before making pasta, tea leaves are classified into three groups. Grade A is a tea leaf from the first three strands. The characteristics of grade A leaves are small, green to blackish-green, fragrant, not musty, no foreign matter. This class comes from fine picks, medium (young shoots) young leaves, and young bird leaves. Grade A is a high quality tea leaf. Grade B is tea leaves in the fourth and fifth strands; the leaves are less curled, wide, yellowish green to blackish green, less fragrant but not musty. This type of quality comes from rough passages (old leaves) to the fifth leaf and young bird leaves. Grade C is a leaf powder widened, blackish green color, less fragrant aroma, but not musty. This type of quality comes from fine-picking, rough-picking destroyed by processing, young bird leaves and medium bird leaves.

Nanoparticle paste

After the tea leaf sorting process, the next step is to make nanoparticle paste using wet milling. Comparison of tea and aquades 1: 8 leaf samples consisting of Grade A samples (1: 8) 15 g of leaves: 120 ml of distilled water; Grade B samples (1: 8) 100 g of leaves: 800 ml of distilled water; and Grade C samples (1: 8) 30 g leaves: 240 ml of distilled water. The milling time used is 6.5 min; run time is 15 min, off time is 1 min.

Characterization

Paste sample characterization was done by particle size analyzer (PSA) and scanning electron microscope (SEM). The paste sample was filtered using filter paper (20 ml), the filter results formed filtrate and residue (tea leaf fiber), and the particle size was measured using PSA. For characterization with scanning electron microscopy analysis, the residue sample (tea leaf fiber) was dried 60°C for 30 min, then smoothed with mortar, and sieved 80 mesh. The sieve results are measured using SEM.

RESULTS

Figure 1 shows the wet milling results for green tea. Wet milling results show a brown paste shape and have a soft texture.

Particle size analysis can be seen in Table 1. By PSA, Grade A green tea has a particle size of 133.6 ± 32.6 nm; Grade B green

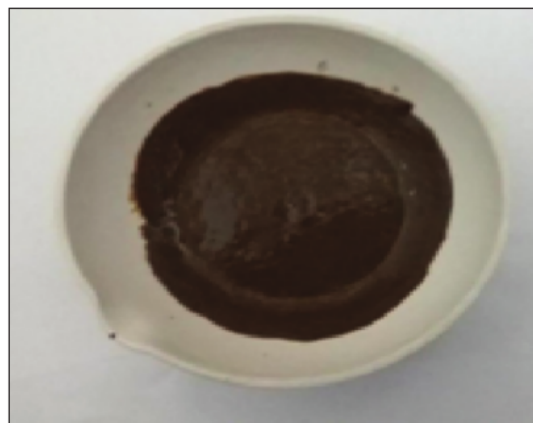


Figure 1: The green tea paste from wet milling process

tea has a particle size of 118.4 ± 30.4 nm; Grade C green tea has a particle size of 198.5 ± 48.7 nm. By SEM, Grade A green tea has a grain size of 77.014 ± 50.759 nm; Grade B green tea has a particle size of 12.987 ± 7.674 nm; Grade C green tea has a particle size of 4.409 ± 5.379 nm.

Figure 2 shows the morphology of green tea nanoparticles. For Grade A, fiber is found without agglomeration. In Grade B, no fiber was found and was dominated by singlet particles. For Grade C, there is no fiber, but there are singlet particles which have agglomerated to form globular.

DISCUSSION

To the best of our knowledge, until now, no study has applied the wet milling technique in making herbal nanoparticles. Wet milling is intended to produce smaller particle sizes than dry milling.^[17] In this study, the results of wet milling are in the form of soft paste. Previous studies have shown that wet milling is a method that can maintain ascorbic acid content, total phenolic, total flavonoid, and free radical activity.^[18] Furthermore, measurements were made with a PSA obtained for Grade B green tea, having the smallest average particle size, followed by Grade A and Grade C. This proves that the characteristics of the raw material determine the size of the particles formed. This finding was confirmed by SEM that Grades B and C had comparable grain sizes. There are differences in the particle morphology of the three grades. For Grade A, fiber is found without agglomeration. In Grade B, no fiber was found and was dominated by singlet particles. For Grade C, there is no fiber, but there are singlet particles which have agglomerated to form globular. Previous studies have stated that ball milling for more than 120 min will trigger fiber breakdown and increase fine particles. These fine particles will form globular.^[19] This study has proven that the formation of globular structures is caused by differences in the raw materials of tea.

Table 1: The size of nanoparticle green tea

Method	Grade A	Grade B	Grade C
PSA	133.6±32.6 nm	118.4±30.4 nm	198.5±48.7 nm
SEM	77.014±50.759 nm	12.987±7.674 nm	4.409±5.379 nm

SEM: Scanning electron microscope, PSA: Particle size analyzer

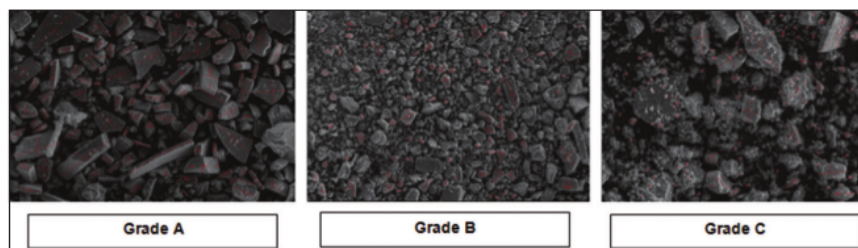


Figure 2: The morphology analysis of green tea nanoparticles. For Grade A, fiber is found without agglomeration. In Grade B, no fiber was found and was dominated by singlet particles. For Grade C, there is no fiber, but there are singlet particles which have agglomerated to form globular. (SEM, ×250)

CONCLUSION

It was concluded that the difference in grade of green tea determines the structure and size of the particles formed. Thus, the wet milling technique can be an alternative in making green tea nanoparticles for industrial scale.

Financial support and sponsorship

PDUPT (Penelitian Dasar Unggulan Perguruan Tinggi - grant Id: 062/SP2H/LT/MULTI/L7/2019).

3

Conflicts of interest

There are no conflicts of interest.

REFERENCES

- Carmona F, Pereira AM. Herbal medicines: Old and new concepts, truths and misunderstandings. *Brazilian J Pharmacogn* 2013;23:379-85.
- Ameh SJ, Obodozie OO, Inyang US, Abubakar MS, Garba M. Current phytotherapy – A perspective on the science and regulation of herbal medicine. *J Med Plants Res* 2010;4:72-81.
- Sardesai VM. Herbal medicines: Poisons or potions? *J Lab Clin Med* 2002;139:343-8.
- Che CT, Zhang H. Plant natural products for human health. *Int J Mol Sci* 2019;20:830.
- Shah KA, Joshi MD, Patravale VB. Biocompatible microemulsions for fabrication of glyceryl monostearate solid lipid nanoparticles (SLN) of tretinoin. *J Biomed Nanotechnol* 2009;5:396-400.
- Namdari M, Eatemadi A, Soleimaninejad M, Hammed AT. A brief review on the application of nanoparticle enclosed herbal medicine for the treatment of infective endocarditis. *Biomed Pharmacother* 2017;87:321-31.
- Afolabi A, Akinlabi O, Bilgili E. Impact of process parameters on the breakage kinetics of poorly water-soluble drugs during wet stirred media milling: A microhydrodynamic view. *Eur J Pharm Sci* 2014;51:75-86.
- Merisko-Liversidge E, Liversidge GG. Nanosizing for oral

and parenteral drug delivery: A perspective on formulating poorly-water soluble compounds using wet media milling technology. *Adv Drug Deliv Rev* 2011;63:427-40.

- Lu M, Ho CT, Huang Q. Improving quercetin dissolution and bioaccessibility with reduced crystallite sizes through media milling technique. *J Funct Food* 2017;37:138-46.
- Lin YS, Tsai YJ, Tsay JS, Lin JK. Factors affecting the levels of tea polyphenols and caffeine in tea leaves. *J Agric Food Chem* 2003;51:1864-73.
- Chan EW, Soh EY, Tie PP, Law YP. Antioxidant and antibacterial properties of green, black, and herbal teas of *Camellia sinensis*. *Pharmacognosy Research* 2011;3:266-72.
- Asbaghi O, Fouladvand F, Gonzalez MJ, Aghamohammadi V, Choghakhori R, Abbasnezhad A. The effect of green tea on C-reactive protein and biomarkers of oxidative stress in patients with type 2 diabetes mellitus: A systematic review and meta-analysis. *Complement Ther Med* 2019;46:210-6.
- Ullah N, Ahmad M, Aslam H, Tahir MA, Aftab M, Bibi N, Ahmad S. Green tea phytochemicals as anticancer: A review. *Asian Pacific J Trop Dis* 2016;6:330-6.
- Rains TM, Agarwal S, Maki KC. Antiobesity effects of green tea catechins: A mechanistic review. *J Nutr Biochem* 2011;22:1-7.
- Thielecke F, Boschmann M. The potential role of green tea catechins in the prevention of the metabolic syndrome – A review. *Phytochemistry* 2009;70:11-24.
- Rameshrad M, Razavi BM, Hosseinzadeh H. Protective effects of green tea and its main constituents against natural and chemical toxins: A comprehensive review. *Food Chem Toxicol* 2017;100:115-37.
- Yu D, Chen J, Ma J, Sun H, Yuan Y, Ju Q, *et al.* Effects of different milling methods on physicochemical properties of common buck wheat flour. *LWT-Food Sci Technol* 2018;92:220-6.
- Islam MZ, Kitamura Y, Kokawa M, Monalisa K, Tsai FH, Miyamura S. Effects of micro wet milling and vacuum spray drying on the physicochemical and antioxidant properties of orange (*Citrus unshiu*) juice with pulp powder. *Food and Bioprocess Technol* 2017;101:132-44.
- Karinkanta P, Illikainen M, Niinimäki J. Effect of different impact events in fine grinding mills on the development of the physical properties of dried Norway spruce (*Picea abies*) wood in pulverisation. *Powder Technol* 2014; 253:352-9.

green tea

ORIGINALITY REPORT

16%

SIMILARITY INDEX

9%

INTERNET SOURCES

13%

PUBLICATIONS

9%

STUDENT PAPERS

PRIMARY SOURCES

1	news.ksu.edu.sa Internet Source	4%
2	Tao Yin, Jae W. Park, Shanbai Xiong. "Physicochemical properties of nano fish bone prepared by wet media milling", LWT - Food Science and Technology, 2015 Publication	4%
3	repository.unair.ac.id Internet Source	2%
4	Hyong Seok Park, Hyung-Kyoon Choi, Sung Jun Lee, Kwon Woo Park, Sung-Gil Choi, Kyoung Heon Kim. "Effect of mass transfer on the removal of caffeine from green tea by supercritical carbon dioxide", The Journal of Supercritical Fluids, 2007 Publication	2%
5	mafiadoc.com Internet Source	1%
6	Sadjadi, Neda Seyed, Majid Mohammad Shahi, Mohammad-Taha Jalali, and Fatemeh Haidari.	1%

"Short-Term Caraway Extract Administration Improves Cardiovascular Disease Risk Markers in Streptozotocin-Induced Diabetic Rats: A Dose-Response Study", Journal of Dietary Supplements, 2014.

Publication

7

Submitted to Pennsylvania State System of Higher Education

Student Paper

1%

8

Sandu Siyoto, Albert Ronald Tule. "Analysis of Bed Occupancy Rate (BOR) in Terms of Internal Factors (Procedures, Doctor, Nurse, Facilities and Infrastructure)", Global Journal of Health Science, 2019

Publication

1%

9

Katharina Schuhlarden, Judith A. Roether, Aldo R. Boccaccini. "Bioactive glasses meet phytotherapeutics: The potential of natural herbal medicines to extend the functionality of bioactive glasses", Biomaterials, 2019

Publication

1%

Exclude quotes

Off

Exclude matches

< 1%

Exclude bibliography

On